



PRAIRIE VALLEY FARM CHAROLAIS

— ANNUAL BULL SALE —

APRIL 11, 2026

1:00 p.m. - Platte Livestock Market, Platte SD

www.pvfcharolais.com

Selling 30 red Angus with Charolais calves at side born before March 1.
Lance Thiry - 605-680-4367



THE FINAL CHAPTER FOR PRAIRIE VALLEY FARM CHAROLAIS — THE LEGACY MOVES FORWARD AT L.G. HERNDON, JR. FARMS

For more than four decades, Prairie Valley Farm Charolais near Platte, South Dakota, has been recognized as a program built on disciplined breeding, strong cow families, and cattle designed to perform in real-world environments. Now, that legacy enters a new chapter as the Prairie Valley Farm Charolais herd moves south to become the foundation of the Charolais program at L.G. Herndon, Jr. Farms in Georgia.

The acquisition carries forward a program developed by the Mason family—one built on a commitment to producing genetics that serve both commercial and purebred breeders.

The opportunity began with a ranch visit in late 2025 while Bo Herndon was in the area looking to purchase a few cattle. As he walked through the PVFC cows, the quality and uniformity of the herd quickly became evident.

Among the cattle that immediately caught his attention were the powerful daughters of WCR Titan, a herd sire David Mason had purchased to move the program forward. These females reflected the maternal strength, balance, strong EPD profiles, and performance PVFC had spent years developing.

For David Mason, the transition represents the closing chapter of a program built through a lifetime devoted to the Charolais breed.

PVFC traces its beginnings to 1980, when David's father, Clarence Mason, purchased a Charolais bull with the goal of developing one of the finest cow herds in South Dakota. Over time, PVFC grew into a highly regarded program, hosting its first bull sale in 1989 and eventually celebrating its 35th Annual Production Sale. Each spring, customers traveled from across the region to Platte, confident in the consistency and integrity of PVFC cattle. This spring's sale will mark the final Prairie Valley Farm Charolais Bull Sale.

"After spending my life building this Charolais herd, it means a great deal to see it move forward with someone who truly appreciates the PVFC cattle and the legacy behind them," David Mason said. "These cow families represent a lifetime of work, and I'm proud to see them continue with Bo."

When Herndon visited the ranch, he quickly realized the significance of the opportunity. "I didn't go to PVFC intending to buy the whole herd," Herndon explained. "But once I saw the overall quality of the cattle and heard David's story, I realized this was more than just a purchase. It felt like the closing chapter of a remarkable legacy for him—and the beginning of a new one for L.G. Herndon, Jr. Farms."

For Herndon, the decision was also personal. "After being out of the cow business for only six months, I realized how important our cow herd had been to my family," he said. "My daughter Sky, my grandson Bryton, and our family loved being around the cows—and to tell the truth, I missed them too."

The PVFC herd now provides the foundation as Herndon re-establishes a Charolais program in Lyons, Georgia.

Looking ahead, L.G. Herndon, Jr. Farms plans to honor the legacy built by the Mason family while guiding the program forward to meet the demands of today's beef industry. The HF operation is committed to producing industry-leading Charolais genetics through disciplined selection, data-driven decisions, advanced reproductive technologies, and thoughtful management—while having fun doing it.

As Bo's daughter Sky explains, "We're really just picking up where we left off, this herd has over 40 years of production behind it. When you think about the depth of female selection behind this herd, it's exciting to imagine what the future holds."

Now, under the stewardship of L.G. Herndon, Jr. Farms, those cow families begin their next chapter—carrying with them the history, discipline, and breeding philosophy that defined Prairie Valley Farm Charolais.



PRAIRIE VALLEY FARM CHAROLAIS

April 11, 2026 1:00 p.m.
Platte Livestock Market, Platte SD

SELLING 45 YEARLINGS AND 24 FALL BULLS

David Mason
36324 SD Hwy 44
Platte, SD 57369
605-680-0780

www.pvfcharolais.com
pvfcharolais78@gmail.com

Lyndon DeVries
27578 365th Ave
Platte, SD 57369
605-481-0474

Welcome to our annual Charolais bull sale at Platte Livestock Market in Platte, SD. Prairie Valley Farm is located five miles west of Platte, South Dakota on Highway 44, is owned and operated by David Mason. The late Clarence Mason began his Charolais herd in 1980, and with the help of his son and hired men expanded his herd to include 175 spring cows and 125 fall cows.

The bulls were fed corn and corn silage, ground hay, NC SRL BPB 35 High Cal 500 RM modified distillers, fed to gain 3.0 - 4.0 pounds a day. You will get scrotal measurements and ultrasound data sale day. The bulls have a very good disposition. Stop in and take a look. The majority are moderately framed. Thank you for your past patronage and we look forward to seeing you April 11th.

Health

Calfhood Vaccine: Vista Once, Autogenous Pink Eye Vaccine, Fusogard Foot Rot Vaccine, Vision 7 Somnus, Vista BVD, Nasalgen 3 PMH, Generic Ivermectin Pour On. Bulls: Anthrax, Vista 5 VL5 SQ CFP, Synanthic and StandGuard – internal and external parasites.

Auctioneer

Dustin Carter, Vermillion, SD

Discount

\$100 Discount if taken home day of sale.

Lunch

A complimentary lunch will be served at 11:30 A.M.

After Sale Hospitality

Make plans to join us at Platte Creek Lodge for after sale hospitality with a social beginning at 5:30 p.m., and meal at 7 p.m.



Buying online is as easy as 1, 2, 3...

1. Create an account at www.dvauction.com under the "register" tab
2. Apply for bidding approval by clicking on the "details" tab at least 24 hours prior to the auction-a DV representative will notify you once you have been approved
3. Tune in for the sale and make your purchases!

After the sale, contact the sale manager or owner to arrange transportation and payment. **High speed internet** is required for successful bidding-be sure to check the lag-time monitor in the top left corner to ensure real-time broadcasts.

Proxy Bidding-if you can't make time to watch the sale, register a proxy bid and let our system represent your bid while you're away. Look for the "proxy bid" tab on the auction listing, and fill in your maximum bids. We'll handle the rest!

Having troubles?

During the auction, you can type a message to the operator at any time for assistance. Our full-time support team can also always be reached at (402) 474-5557.

HERD SIRES

A

WCR TITAN 061 P

M939276 Polled 2/2/20

DC/CRJ TANK E108 P
M905524

{ BHD PERSEUS B65 P
CRJ MS ZYLEN C1587

WCR MS DUKE 8526 ET P
EF1266281

{ WCR SIR DUKE 7340 P
WCR MS FIREWATER 2111 P

BW	WW	YW	TSI	
68	736	1175	327	
CE	BW	WW	YW	Milk
20.1	-4.5	91	166	36

EPDs

Selected from Wienk Charolais Ranch, Titan offers a big spread from birth to weaning with plenty of performance and carcass merit. This years set of calves is exceptional.



C

WDZ GREAT DIVIDE 2071

M973974 Polled 2/8/22

TRI-N BROOKS 34H
M955753

{ SCX JEHU 233E
MISS LOUBER SYNERGY 850B

JLS MORE POWER 7110 PLD
F1244717

{ WC MORE POWER 5248 P
JLS TENACIOUS 3110 PLD

BW	WW	YW	TSI	
93	914	1507	284	
CE	BW	WW	YW	Milk
5.9	1.2	82	136	25

EPDs

Great Divide was selected as the high selling bull from the 2023 Zehnder Waage Partnership Bull Sale. His first calf crop has exceeded expectations in terms of performance and quality. He ranks in the top 2% WW, 5% YW, 1% CW & 5% TSI in the entire breed.



B

WDZ AEROSMITH 1109 PLD

M958524 Polled 2/24/21

WDZ PARADISE 894
M913170

{ DCR MR COMMISSIONER C49
DCR MS TRUE VALUE B270

WC MISS VALUE 5283 P
F1205316

{ LT BLUE VALUE 7903 ET
WC MS BLEND 2158 P

BW	WW	YW	TSI	
89	798	1312	255	
CE	BW	WW	YW	Milk
15.1	-3.3	60	101	31

EPDs

We invested heavily in Aerosmith and are very happy with the results. His progeny come easy, with good vigor and grow quickly to weaning. We project that his offspring will have a shot more carcass quality.



D

LT TIOGA 9704 PLD

M928706 Polled 3/1/19

LT TIOGA 6281 PLD
M880397

{ LT TIOGA 4090 PLD
LT MOLLY 4093 PLD

LT SHEILA 7678 PLD
F1245527

{ LT JOURNEY 5208 PLD
LT SHEILA 4818 PLD

BW	WW	YW	TSI	
80	634	1060	273	
CE	BW	WW	YW	Milk
17.7	-4.4	55	106	33

EPDs

9704 was purchased from the LT program to add calving ease and quality. This sire group is consistent and the quality runs deep. Raises very good daughters.



E FC OLYMPUS 2092 PLD ET

EM980196 Polled 3/4/22

PVF RIDGE 7142
M899820

{ SCC O'RAILLE 181C PLD
PVF CHISUM 1340

LT BRENDA 2184 PLD
F1156384

{ LT BRIDGER 9191 PLD
LT BRENDA 8034 PLD

BW	WW	YW	TSI	
88	805	1315	289	
CE	BW	WW	YW	Milk
7.5	0.1	97	171	12

EPDs

FC Olympus is a son of past Prairie Valley Farms high seller PVF Ridge. Olympus offers excellent performance in tandem with maternal excellence stemming from his prolific dam, LT Brenda 2184. Bought from Full Circle.



F WDZ GOLDEN STATE 076

M941604 Polled 2/22/20

BAR S GOLDEN STATE 5532
M861541

{ EB CALIFORNIA 1041
BAR S MISS KOJO 0698

JLS LANZA LADY 3945 PLD
F1180214

{ WINN MANS LANZA 610S
JLS MEDORA 945 PLD

BW	WW	YW	TSI	
89	735	1177	264	
CE	BW	WW	YW	Milk
15.4	-2.7	63	106	31

EPDs

We bought Golden State for a heifer bull and are pleased with the results. We believe that he will consistently produce easy calving cattle that offer longevity. Recommended for second calvers.



G SCR LC CORONA 439

M856365 Polled 2/12/14

JES CORONA J370
M498013

{ HCR CORONA 2105 POLLED
JES MS HI YIELD F573

SCR MISS LC LANZA 238
F1162397

{ LT CONTINENTAL 0073 P
SCR MISS LC LIMINATOR 850

BW	WW	YW	TSI	
76	693	1347	270	
CE	BW	WW	YW	Milk
19.1	-4.9	63	116	39

EPDs

We used Corona as an outcross option and are happy with what he produced. A calving ease bull with plenty of performance.

H GHC CRUSH 1513

EM973419 Polled 11/3/21

GHC REAGAN 9012
EM928719

{ LT BLUE VALUE 7903 ET
LT BRENDA 6120 PLD

M&M MS CARBINE 1567 PLD
F1151854

{ M&M RAPTOR 8122 PLD
MS COOLEY JPOT 1107N9 ET

BW	WW	YW	TSI	
			271	
CE	BW	WW	YW	Milk
11.0	0.0	85	129	10.2

EPDs

Sired by the popular GHC Reagan, GHC Crush's dam is the extremely prolific M&M Ms. Carbine 1567. He excels in growth and carcass while still having a double digit calving ease EPD along with a negative birthweight figure. Bull would work well on second calvers.

I SCC RIPTIDE 19H PLD

M949531 Polled 3/2/2020

LT TIOGA 4090 PLD
M852840

{ BHC TOP PRO 7025 P
LT BRENDA 8034 PLD

SCC NET RETURN 18F PLD
F1297827

{ WC NET RETURN 5221 P
SCC SUPERMAN 150B PLD

BW	WW	YW	TSI	
86	776	1354	273	
CE	BW	WW	YW	Milk
15.9	-3.2	64	126	65

EPDs

Riptide is a proven calving ease bull that has sired high sellers for multiple purebred operators.



J LT DAKOTA RUSH 5500 P

M865074 Polled 2/14/15

{ LT RIO BRAVO 3181 P
 { LT BRENDA'S EASE 3055PLD
 { LK DISTANCE 1109
 { LK MISS MONTGOMERY 164

LT RUSHMORE 8060 PLD
 M760665

LT STARR 360 PL
 F1179306

BW	WW	YW	TSI	
74	790	1305	274	
CE	BW	WW	YW	Milk
19.9	-4.6	68	125	29

EPDs

We used Dakota Rush in our AI program due to his consistency and quality.

L LT TIOGA 3364 PLD

M989854 Polled 2/11/23

{ LT TIOGA 4090 PLD
 { MISS HCR FRAN 7137 PLD
 { RBM FARGO Y111
 { LT JOURNEY 6456 PLD

LT TIOGA 1726 PLD
 M964972

LT JOURNEY 0609 PLD
 F1298512

BW	WW	YW	TSI	
84	758	1225	292	
CE	BW	WW	YW	Milk
12.0	-2.3	72	137	37

EPDs

Tioga is a very consistent sire that offers a balanced EPD profile.

K LT AFFINITY 6221 PLD

M880381 Polled 3/10/16

{ LT RIO BRAVO 3181 P
 { LT BRENDA'S EASE 3055PLD
 { WINN MANS LANZA 610S
 { LT SILVER ATHENA 7123 P

LT RUSHMORE 8060 PLD
 M760665

LT ATHENA 1247
 F1140204

BW	WW	YW	TSI	
88	816	1310	252	
CE	BW	WW	YW	Milk
17.1	-5.9	52	106	33

EPDs

LT Affinity is a heavily used AI sire with almost 3,000 head in the AICA database.



POUNDS MATTER

PROFIT COUNTS

An IMI Global Age, Source & Genetic Verification Program for Charolais-influenced Feeder Calves

Adding value through:

- Documentation of health protocols & BQA certification
- Exposure of Charolais influenced genetics to a large list of potential buyers
- Age & Source Verification
- NHTC, VNB and Beef Care Certification
- Genetic Benchmarking through registered Sires or Dams

816.464.5977 • Fax: 816.464.5759
 info@charolaisusa.com
 www.CHAROLAISUSA.com

© American-International Charolais Association 2023

YEARLINGS

Lot 101 PVFC OLYMPUS 5101 PLD

M1016769 Polled Calved: 4/3/25 PA-F

FC OLYMPUS 2092 PLD ET { PVF RIDGE 7142
LT BRENDA 2184 PLD

PVFC RIVER RIDGE 2201 PLD { SCR LC CORONA 439
PVFC 0202 RIVER RIDGE PLD

BW	WW	YW	YR	ADG
104	969	1652	115	4.27

EPDs	CE	BW	WW	YW	MILK	TSI
	6.5	1.3	103	169	25	284

An Olympus son with extreme growth.
Top 1% of the breed for both WW & YW EPD's.

Lot 102 PVFC OLYMPUS 5102 PLD

M1016770 Polled Calved: 4/7/25 PA-F

FC OLYMPUS 2092 PLD ET { PVF RIDGE 7142
LT BRENDA 2184 PLD

PVFC NIOBRARA 2204 PLD { SCR LC CORONA 439
PVFC 0219 NIOBRARA PLD

BW	WW	YW	YR	ADG
85	938	1549	107.8	3.82

EPDs	CE	BW	WW	YW	MILK	TSI
	15.8	-1.8	85	151	36	296

Another high-performance Olympus son.
A 188 WW Ratio and top 9% TSI figure.

Lot 103 PVFC OLYMPUS 5103 PLD

M1016771 Polled Calved: 3/28/25 PA-F

FC OLYMPUS 2092 PLD ET { PVF RIDGE 7142
LT BRENDA 2184 PLD

PVFC DAKOTA RUSH 2208 PLD { WCR TITAN 061 P
PVFC 0232 DAKOTA RUSH PLD

BW	WW	YW	YR	ADG
90	909	1525	106.2	3.85

EPDs	CE	BW	WW	YW	MILK	TSI
	10.6	0.2	105	156	29	298

This bull excels in terms of red meat yield with a
top 4% REA EPD. Big topped and heavy muscled.



Lot 104 PVFC OLYMPUS 5104 PLD

M1016773 Polled Calved: 3/22/25 PA-F

FC OLYMPUS 2092 PLD ET { PVF RIDGE 7142
LT BRENDA 2184 PLD

PVFC SIR WIND 2211 PLD { LT TIOGA 9704 PLD
PVFC SIR WIND 9213

BW	WW	YW	YR	ADG
79	807	1396	97.2	3.68

EPDs	CE	BW	WW	YW	MILK	TSI
	4	2.2	93	160	23	269

An Olympus son with a modest birthweight and
still over 800 lbs. of weaning weight.



Lot 105 PVFC OLYMPUS 5105 PLD

M1016772 Polled Calved: 3/4/25 PA-F

FC OLYMPUS 2092 PLD ET { PVF RIDGE 7142
LT BRENDA 2184 PLD

PVFC DAKOTA RUSH 2217 PLD { LT TIOGA 9704 PLD
PVFC DAKOTA RUSH 9226

BW	WW	YW	YR	ADG
88	829	1451	101	3.89

EPDs	CE	BW	WW	YW	MILK	TSI
	14.7	-2.2	100	173	21	306

This bull will excel if you retain ownership. He is in
the top 2% CW and 5% REA.

Lot 106 PVFC OLYMPUS 5106 PLD

M1016774 Polled Calved: 3/18/25 PA-F

FC OLYMPUS 2092 PLD ET { PVF RIDGE 7142
LT BRENDA 2184 PLD

PVFC SILVER DIAMOND 2218 { LT TIOGA 9704 PLD
PVFC SILVER DIAMOND 9228

BW	WW	YW	YR	ADG
100	832	1390	96.8	3.49

EPDs	CE	BW	WW	YW	MILK	TSI
	6.8	1.3	85	140	20	269

Big time performance in this bull. You should
appreciate his look and build.

Lot 107 PVFC OLYMPUS 5107 PLD

M1016775 Polled Calved: 3/6/25 PA-F

FC OLYMPUS 2092 PLD ET { PVF RIDGE 7142
LT BRENDA 2184 PLD

PVFC SILVER DIAMOND 2222 { LT TIOGA 9704 PLD
PVFC SILVER DIAMOND 9237

BW	WW	YW	YR	ADG
75	865	1438	100.1	3.58

EPDs	CE	BW	WW	YW	MILK	TSI
	15.9	-4.2	79	124	25	270

Here is a calving ease Olympus son that offers a double-digit CE and a negative BW EPD.



Lot 109 PVFC OLYMPUS 5109 PLD

M1016777 Polled Calved: 3/12/25 PA-F

FC OLYMPUS 2092 PLD ET { PVF RIDGE 7142
LT BRENDA 2184 PLD

PVFC TOP IMPRESS 2236 PLD { LT PATRIOT 9225 PLD
PVF 4211 TOP IMPRESS

BW	WW	YW	YR	ADG
90	797	1413	98.4	3.85

EPDs	CE	BW	WW	YW	MILK	TSI
	11.5	-1.6	71	141	17	277

This bull is long-spined, deep-sided, and offers plenty of growth.



Lot 108 PVFC OLYMPUS 5108 SC

M1016776 Scurred Calved: 3/10/25 PA-F

FC OLYMPUS 2092 PLD ET { PVF RIDGE 7142
LT BRENDA 2184 PLD

PVFC LEDGER PRIDE 2224 { EC LOCK N LOAD 951 PLD
PVFC 8201 LEDGER PRIDE

BW	WW	YW	YR	ADG
85	792	1440	100.3	4.05

EPDs	CE	BW	WW	YW	MILK	TSI
	16.5	-3.8	75	134	26	282

This is a balanced, no-holes bull that is well-structured.



Lot 110 PVFC RIPTIDE 5110 PLD

M1017475 Polled Calved: 2/12/25 PA-F

SCC RIPTIDE 19H PLD { LT TIOGA 4090 PLD
SCC NET RETURN 18F PLD

PVFC NIOBRARA 3203 PLD { FC RANSOM 107 P
PVFC 0219 NIOBRARA PLD

BW	WW	YW	YR	ADG
75	824	1413	98.4	3.68

EPDs	CE	BW	WW	YW	MILK	TSI
	18.3	-4.8	76	127	32	278

A son of the very popular Riptide that offers excellent calving ease without sacrificing growth.

Lot 111 PVFC RIPTIDE 5111 PLD

M1017476 Polled Calved: 2/18/25 PA-F

SCC RIPTIDE 19H PLD { LT TIOGA 4090 PLD
SCC NET RETURN 18F PLD

PVFC CITATION 3209 PLD { WDZ GOLDEN STATE 076
PVFC CITATION 0404 PLD

BW	WW	YW	YR	ADG
92	840	1422	99	3.64

EPDs	CE	BW	WW	YW	MILK	TSI
	14.6	-1.3	71	134	28	280

A high-performing Riptide son that ratios 106 at weaning.

Lot 112 PVFC DAKOTA RUSH 5112 PLD

M1016778 Polled Calved: 2/10/25 PA-F

LT DAKOTA RUSH 5500 P { LT RUSHMORE 8060 PLD
LT STARR 360 PLD

PVFC NIOBRARA 3214 PLD { SCR LC CORONA 439
PVFC NIOBRARA 1224 PLD

BW	WW	YW	YR	ADG
72	814	1508	105	4.34

EPDs	CE	BW	WW	YW	MILK	TSI
	20.5	-5	68	127	41	280

This Dakota Rush son offers excellent calving ease figures.
Top 1% CE & 5% BW EPD's.



Lot 115 PVFC RIPTIDE 5115 PLD

M1017479 Polled Calved: 2/12/25 PA-F

SCC RIPTIDE 19H PLD { LT TIOGA 4090 PLD
SCC NET RETURN 18F PLD

PVFC SIR WIND 3222 PLD { WCR BUSTER 166 P
PVFC SIR WIND 9216

BW	WW	YW	YR	ADG
100	909	1579	109.9	4.19

EPDs	CE	BW	WW	YW	MILK	TSI
	8.7	1.2	80	153	33	288

A Riptide that weighed over 900 lbs. at weaning.
Top 7% WW & 3% YW EPD's.



Lot 113 PVFC RIPTIDE 5113 PLD

M1017477 Polled Calved: 2/14/25 PA-F

SCC RIPTIDE 19H PLD { LT TIOGA 4090 PLD
SCC NET RETURN 18F PLD

PVFC NIOBRARA 3215 PLD { WCR TITAN 061 P
PVFC NIOBRARA 1225 PLD

BW	WW	YW	YR	ADG
82	829	1367	95.2	3.36

EPDs	CE	BW	WW	YW	MILK	TSI
	16.8	-3.8	77	140	35	288

A calving ease Riptide son that is in the
top 20% of the breed for TSI.

Lot 114 PVFC RIPTIDE 5114 PLD

M1017478 Polled Calved: 2/13/25 PA-F

SCC RIPTIDE 19H PLD { LT TIOGA 4090 PLD
SCC NET RETURN 18F PLD

PVFC AFFINITY 3217 PLD { WDZ GOLDEN STATE 076
PVFC AFFINITY 1230

BW	WW	YW	YR	ADG
80	825	1398	97.3	3.58

EPDs	CE	BW	WW	YW	MILK	TSI
	13.7	-2.3	75	130	30	283

This bull is very balanced in terms of his EPD's and phenotype.

Lot 116 PVFC CORONA 5116 SC

M1016779 Scurred Calved: 2/13/25 PA-F

SCR LC CORONA 439 { JES CORONA J370
SCR MISS LC LANZA 238

PVFC SYNDICATE 3225 PLD { WCR BUSTER 166 P
PVFC SYNDICATE 9239

BW	WW	YW	YR	ADG
90	890	1487	103.5	3.73

EPDs	CE	BW	WW	YW	MILK	TSI
	13.9	-1.5	86	150	39	297

Sired by Corona, he ratios 112 at weaning
and is in the top 2% for his Milk EPD.



Lot 117 PVFC TITAN 5117 SC

M1016780 Scurred Calved: 2/14/25 PA-F

WCR TITAN 061 P { DC/CRJ TANK E108 P
WCR MS DUKE 8526 ET P

PVFC CAPITAL 3229 PLD { LT TIOGA 9704 PLD
PVFC 8230 LEDGER CAPITAL

BW	WW	YW	YR	ADG
81	853	1463	101.9	3.81

EPDs	CE	BW	WW	YW	MILK	TSI
	17.6	-3.2	75	123	38	280

Titan has been a popular sire. This bull is high-performing and good-looking.



Lot 119 PVFC TITAN 5119 PLD

M1016781 Polled Calved: 2/16/25 PA-F

WCR TITAN 061 P { DC/CRJ TANK E108 P
WCR MS DUKE 8526 ET P

PVFC RESERVE 3233 PLD { LT TIOGA 9704 PLD
PVF RESERVE 7204 PLD

BW	WW	YW	YR	ADG
82	784	1443	100	4.12

EPDs	CE	BW	WW	YW	MILK	TSI
	19.3	-4.8	71	137	37	312

A Titan son that is in the top 6% CW and 3% REA EPD's. Very good muscle shape.



Lot 118 PVFC AFFINITY 5118 PLD

M1017480 Polled Calved: 2/12/25 PA-F

LT AFFINITY 6221 PLD { LT RUSHMORE 8060 PLD
LT ATHENA 1247

PVFC DAKOTA RUSH 3230 PLD { WCR TITAN 061 P
PVFC 8233 TOP RUSH

BW	WW	YW	YR	ADG
78	799	1332	92.7	3.33

EPDs	CE	BW	WW	YW	MILK	TSI
	21.5	-6.3	63	123	45	288

This is a big spread, Affinity son: top 1% CE and 2% BW EPD's with an almost 800 lb. weaning weight.



Lot 120 PVFC RIPTIDE 5120 PLD

M1017481 Polled Calved: 2/10/25 PA-F

SCC RIPTIDE 19H PLD { LT TIOGA 4090 PLD
SCC NET RETURN 18F PLD

PVFC SILVER DIAMOND 3235 { WCR TITAN 061 P
PVF SILVER DIAMOND 6201

BW	WW	YW	YR	ADG
75	778	1317	91.7	3.37

EPDs	CE	BW	WW	YW	MILK	TSI
	19.5	-5.1	56	109	32	268

A calving ease Riptide son that still weighed almost 800 lbs. at weaning.



Lot 121 PVFC TIOGA 5121 PLD TW

M1017482 Polled Calved: 2/14/25 PA-F

LT TIOGA 3364 PLD { LT TIOGA 1726 PLD
LT JOURNEY 0609 PLD

PVFC RESERVE 3240 PLD { WCR TITAN 061 P
PVF RESERVE 6224

BW	WW	YW	YR	ADG
57	814	1412	100	3.74

EPDs	CE	BW	WW	YW	MILK	TSI
	19.6	-3.7	67	116	30	290

Excellent calving ease prospect. 57 lb. birthweight and over 800 lb. weaning weight.

Lot 126 PVFC GREAT DIVIDE 5126 PLD

M1016784 Polled Calved: 3/15/25 PA-F

WDZ GREAT DIVIDE 2071 { TRI-N BROOKS 34H
JLS MORE POWER 7110 PLD

PVFC LOCK N LOAD 1216 PLD { EC LOCK N LOAD 951 PLD
PVF LEDGER 7208 PLD

BW	WW	YW	YR	ADG
101	787	1398	97.3	3.82

EPDs	CE	BW	WW	YW	MILK	TSI
	13.3	-0.9	73	115	23	284

Another high-quality Great Divide son that is in the top 25% of the breed for TSI.

Lot 122 PVFC RIPTIDE 5122 PLD

M1017483 Polled Calved: 2/17/25 PA-F

SCC RIPTIDE 19H PLD { LT TIOGA 4090 PLD
SCC NET RETURN 18F PLD

PVFC ASSET 3246 PLD { EC LOCK N LOAD 951 PLD
PVF 4242 DAKOTA ASSET

BW	WW	YW	YR	ADG
93	839	1474	102.6	3.97

EPDs	CE	BW	WW	YW	MILK	TSI
	15.8	-2.7	61	120	41	256

A very balanced bull that is in the top 1% for his Milk EPD.

Lot 127 PVFC GREAT DIVIDE 5127 PLD

M1016785 Polled Calved: 3/9/25 PA-C

WDZ GREAT DIVIDE 2071 { TRI-N BROOKS 34H
JLS MORE POWER 7110 PLD

PVF CHISUM 1340 { PV CHISUM 1121 PLD
PV TOP PRO 1135 PLD

BW	WW	YW	YR	ADG
85	750	1329	92.5	3.62

EPDs	CE	BW	WW	YW	MILK	TSI
	12.1	-0.1	73	127	23	279

This bull has a modest birthweight and was still weaned over 750 lbs. at weaning.

Lot 123 PVFC TIOGA 5123 PLD

M1016782 Polled Calved: 2/17/25 PA-F

LT TIOGA 3364 PLD { LT TIOGA 1726 PLD
LT JOURNEY 0609 PLD

PVFC LONG DISTANCE 3248 { EC LOCK N LOAD 951 PLD
PVF 4417 LONG SUPERIOR

BW	WW	YW	YR	ADG
105	802	1424	99.1	3.89

EPDs	CE	BW	WW	YW	MILK	TSI
	14.2	-1.2	62	124	34	267

Sired by LT Tioga, a bull known for producing balanced, good-footed progeny.

Lot 128 PVFC GREAT DIVIDE 5128 PLD

M1016786 Polled Calved: 3/15/25 PA-F

WDZ GREAT DIVIDE 2071 { TRI-N BROOKS 34H
JLS MORE POWER 7110 PLD

PVFC TIOGA 1228 PLD { LT TIOGA 9704 PLD
PVFC LANDMARK 9211

BW	WW	YW	YR	ADG
89	876	1449	100.9	3.58

EPDs	CE	BW	WW	YW	MILK	TSI
	13.2	-0.8	78	135	32	293

A high-performance Great Divide son that ratios 111 at weaning and is in the top 15% of the breed for TSI.

Lot 125 PVFC GREAT DIVIDE 5125 PLD

M1016783 Polled Calved: 3/18/25 PA-F

WDZ GREAT DIVIDE 2071 { TRI-N BROOKS 34H
JLS MORE POWER 7110 PLD

PVFC CAPITAL 1210 PLD { WDZ CAPITAL 617 P
PVF ASSET 5206

BW	WW	YW	YR	ADG
100	806	1368	95.2	3.51

EPDs	CE	BW	WW	YW	MILK	TSI
	10	-0.6	70	111	34	263

Sired by WDZ Great Divide, sire of several high sellers last year. This bull has excellent growth and eye appeal.

Lot 129 PVFC GREAT DIVIDE 5129 PLD

M1016787 Polled Calved: 3/18/25 PA-F

WDZ GREAT DIVIDE 2071 { TRI-N BROOKS 34H
JLS MORE POWER 7110 PLD

PVFC TIOGA 1232 PLD { LT TIOGA 9704 PLD
PVFC DAKOTA RUSH 9226

BW	WW	YW	YR	ADG
98	882	1437	100	3.47

EPDs	CE	BW	WW	YW	MILK	TSI
	14.6	-0.8	66	118	32	261

This bull ratioed 114 for his weaning gain. Note this bull if you're looking for efficiency.

Lot 130 PVFC GREAT DIVIDE 5130 PLD

M1016788 Polled Calved: 3/21/25 PA-C

WDZ GREAT DIVIDE 2071 { TRI-N BROOKS 34H
JLS MORE POWER 7110 PLD

PVFC AFFINITY 1233 { LT AFFINITY 6221 PLD
PVFC SIR WIND 9231

BW	WW	YW	YR	ADG
98	773	1376	95.8	3.77

EPDs	CE	BW	WW	YW	MILK	TSI
	10	-0.3	74	130	34	279

This is a very balanced Great Divide son that is within the top quarter of the breed for both WW & YW EPD's.



Lot 132 PVFC AEROSMITH 5132 PLD

M1016790 Polled Calved: 3/19/25 PA-C

WDZ AEROSMITH 1109 PLD { WDZ PARADISE 894
WC MISS VALUE 5283 P

PVFC 0215 NIOBRARA PLD { BHC NIOBRARA 836 P
PVF TOP REX 6210

BW	WW	YW	YR	ADG
96	905	1553	108.1	4.05

EPDs	CE	BW	WW	YW	MILK	TSI
	10.3	1.2	82	129	34	265

This bull weighed over 900 lbs. at weaning. He is long-spined and dense made.



Lot 131 PVFC TITAN 5131 PLD

M1016789 Polled Calved: 3/3/25 PA-F

WCR TITAN 061 P { DC/CRJ TANK E108 P
WCR MS DUKE 8526 ET P

PVFC 0213 NET RETURN PLD { SCC NET RETURN 113E PLD
PVF ASSET 5208

BW	WW	YW	YR	ADG
101	886	1454	101.2	3.55

EPDs	CE	BW	WW	YW	MILK	TSI
	11	-0.3	90	156	26	306

Sired by WDZ Aerosmith, this bull offers excellent growth and is in the top 30% for his Marbling EPD.



Lot 133 PVFC TITAN 5133 PLD

M1016791 Polled Calved: 3/1/25 PA-F

WCR TITAN 061 P { DC/CRJ TANK E108 P
WCR MS DUKE 8526 ET P

PVFC 0232 DAKOTA RUSH PLD { LT DAKOTA RUSH 5500 P
PVFC 8219 LEADER WIND

BW	WW	YW	YR	ADG
75	751	1397	97.3	4.04

EPDs	CE	BW	WW	YW	MILK	TSI
	20.6	-4.9	83	146	24	298

Another balanced Titan son that is in the top 8% TSI.



Lot 134 PVFC AEROSMITH 5134 PLD

M1016792 Polled Calved: 3/15/25 PA-C

WDZ AEROSMITH 1109 PLD { WDZ PARADISE 894
WC MISS VALUE 5283 P

PVFC LANDMARK 9205 { LT LANDMARK 5052 PLD
PVF COUNTYLINE 7228 PLD

BW	WW	YW	YR	ADG
103	804	1367	95.2	3.52

EPDs	CE	BW	WW	YW	MILK	TSI
	15.9	-3.2	72	118	27	257

An Aerosmith son that is good in terms of his structural integrity.



Lot 136 PVFC TITAN 5136 PLD

M1016794 Polled Calved: 3/9/25 PA-F

WCR TITAN 061 P { DC/CRJ TANK E108 P
WCR MS DUKE 8526 ET P

PVFC RESERVE 9227 { LT RESERVE 3274 PLD
PV IMPRESSIVE 833 PLD

BW	WW	YW	YR	ADG
103	838	1555	108.3	4.48

EPDs	CE	BW	WW	YW	MILK	TSI
	9.7	0.9	84	150	26	300

This is a high-performance Titan son that is in the top one-third of the breed for Marbling.

Lot 137 PVFC TITAN 5137 PLD

M1016795 Polled Calved: 3/23/25 PA-F

WCR TITAN 061 P { DC/CRJ TANK E108 P
WCR MS DUKE 8526 ET P

9414 PVFC LANDMARK PLD { LT LANDMARK 5052 PLD
PVF SILVER ARROW 5421

BW	WW	YW	YR	ADG
93	887	1569	109.2	4.26

EPDs	CE	BW	WW	YW	MILK	TSI
	18.4	-5.6	75	149	37	292

Big weaning weight of 887 lbs. to ratio 112.



Lot 135 PVFC AEROSMITH 5135 PLD

M1016793 Polled Calved: 3/21/25 PA-F

WDZ AEROSMITH 1109 PLD { WDZ PARADISE 894
WC MISS VALUE 5283 P

PVFC DAKOTA RUSH 9214 { LT DAKOTA RUSH 5500 P
PVF LEDGER 7207 PLD

BW	WW	YW	YR	ADG
83	863	1473	102.6	3.81

EPDs	CE	BW	WW	YW	MILK	TSI
	18.1	-3.6	68	131	36	278

This is a big spread Titan son that has a modest birthweight and weighed over 850 lbs. at weaning.



Lot 138 PVFC TITAN 5138 PLD

M1016796 Polled Calved: 3/1/25 PA-F

WCR TITAN 061 P { DC/CRJ TANK E108 P
WCR MS DUKE 8526 ET P

PVFC 8201 LEDGER PRIDE { PV LEDGER 1283 PLD
PV PRIDE 1002 PLD

BW	WW	YW	YR	ADG
90	818	1493	103.9	4.22

EPDs	CE	BW	WW	YW	MILK	TSI
	15.9	-2.1	78	144	35	306

This Titan son is high performance and is in the top 4% of the breed for TSI.



Lot 141 PVFC AEROSMITH 5141 PLD

M1016799 Polled Calved: 3/21/25 PA-C

WDZ AEROSMITH 1109 PLD { WDZ PARADISE 894
WC MISS VALUE 5283 P

PVFC 8234 RESERVE RIDGE { LT RIVER RIDGE 6034 PLD
PVF RESERVE 6223

BW	WW	YW	YR	ADG
98	792	1302	90.6	3.19

EPDs	CE	BW	WW	YW	MILK	TSI
	11.6	-1.9	59	121	25	257

If you retain ownership, note this bull. He is in the top 25% of the breed for Marbling.

Lot 142 PVFC AEROSMITH 5142 PLD

M1016800 Polled Calved: 3/21/25 PA-F

WDZ AEROSMITH 1109 PLD { WDZ PARADISE 894
WC MISS VALUE 5283 P

PVFC 8240 LONG ASSET PLD { LT ASSET 2353 PLD
PVF LONG DISTANCE 6244

BW	WW	YW	YR	ADG
92	749	1288	89.7	3.37

EPDs	CE	BW	WW	YW	MILK	TSI
	11.7	-2.3	56	107	31	259

Here is a long-spined, deep-sided Aerosmith son that has plenty of eye appeal.

Lot 139 PVFC TITAN 5139 PLD

M1020989 Polled Calved: 3/26/25 PA-F

WCR TITAN 061 PLD { DC/CRJ TANK E108 P
WCR MS DUKE 8526 ET P

PVFC 8226 LONG CAPITAL { WDZ CAPITAL 617 P
PVF LONG DISTANCE 5203

BW	WW	YW	YR	ADG
103	872	1566	109	4.34

EPDs	CE	BW	WW	YW	MILK	TSI
	10.3	-0.6	70	137	32	281

Here is an Titan son that is in the top 20% of the breed for Marbling.

Lot 143 PVFC TITAN 5143 PLD

M1016801 Polled Calved: 3/21/25 PA-F

WCR TITAN 061 P { DC/CRJ TANK E108 P
WCR MS DUKE 8526 ET P

PVF REX 7215 PLD { LKD TY'S REX
PV DAKOTA 1229 PLD

BW	WW	YW	YR	ADG
95	820	1490	103.7	4.19

EPDs	CE	BW	WW	YW	MILK	TSI
	14.7	-0.2	74	135	30	282

This Titan son weighed over 800 lbs. at weaning.

Lot 140 PVFC TITAN 5140 PLD

M1016798 Polled Calved: 3/3/25 PA-F

WCR TITAN 061 P { DC/CRJ TANK E108 P
WCR MS DUKE 8526 ET P

PVFC 8229 ARROW SYN { LT SYNDICATE 6409 PLD
PVF SILVER ARROW 5216

BW	WW	YW	YR	ADG
90	787	1457	101.4	4.19

EPDs	CE	BW	WW	YW	MILK	TSI
	14.4	-1.7	74	130	33	283

A Titan son that should excel in terms of red meat yield.

Lot 144 PVFC GOLDEN STATE 5144 PLD

M1016802 Polled Calved: 3/8/25 PA-F

WDZ GOLDEN STATE 076 { BAR S GOLDEN STATE 5532
JLS LANZA LADY 3945 PLD

PVF RESERVE 6229TWXX { LT RESERVE 3274 PLD
PV CAD 1239 PLD

BW	WW	YW	YR	ADG
103	862	1441	100.3	3.62

EPDs	CE	BW	WW	YW	MILK	TSI
	13.2	-0.6	67	118	28	270

This Golden State son has plenty of growth as he weighed over 800 lbs. at weaning.

Lot 145 PVFC GOLDEN STATE 5145 PLD

M1016803 Polled Calved: 3/13/25 PA-F

WDZ GOLDEN STATE 076 { BAR S GOLDEN STATE 5532
JLS LANZA LADY 3945 PLD

PVF LONG DISTANCE 6244 { LT LONG DISTANCE 9001 PLD
PVF 4245 FAST CHISUM

BW	WW	YW	YR	ADG
98	803	1326	92.3	3.27

EPDs	CE	BW	WW	YW	MILK	TSI
	9.8	-0.2	75	134	29	279

Another Golden State son that weighed over 800 lbs. at weaning.

Lot 149 PVFC GOLDEN STATE 5149 PLD

M1016807 Polled Calved: 3/21/25 PA-F

WDZ GOLDEN STATE 076 { BAR S GOLDEN STATE 5532
JLS LANZA LADY 3945 PLD

PVF 4222 TOP GUN { PVF TOP PRO 7025 P
PVF CAD 1035 PLD

BW	WW	YW	YR	ADG
90	824	1315	91.6	3.07

EPDs	CE	BW	WW	YW	MILK	TSI
	11.6	-0.6	57	94	29	255

A well-balanced, good-looking Golden State son with plenty of eye appeal.

Lot 146 PVFC GOLDEN STATE 5146 PLD

M1016804 Polled Calved: 3/21/25 PA-F

WDZ GOLDEN STATE 076 { BAR S GOLDEN STATE 5532
JLS LANZA LADY 3945 PLD

PVF IMPRESS LEDGER 5219 { PV LEDGER 1283 PLD
PV DAKOTA DIAMOND 1105 P

BW	WW	YW	YR	ADG
105	830	1403	97.7	3.58

EPDs	CE	BW	WW	YW	MILK	TSI
	10.8	0.5	79	122	22	259

This is a long-spined, larger-framed bull with good growth.

Lot 150 PVFC GOLDEN STATE 5150 PLD

M1016808 Polled Calved: 4/9/25 PA-F

WDZ GOLDEN STATE 076 { BAR S GOLDEN STATE 5532
JLS LANZA LADY 3945 PLD

PVF 4417 LONG SUPERIOR { LT LONG DISTANCE 9001 PLD
PV WICHDOUBT 1277 PLD

BW	WW	YW	YR	ADG
90	803	1361	94.8	3.49

EPDs	CE	BW	WW	YW	MILK	TSI
	15.8	-2.8	70	124	31	278

This bull combines excellent growth and carcass quality as he is in the top 30% of the breed for REA.

Lot 147 PVFC GOLDEN STATE 5147 PLD

M1016805 Polled Calved: 3/14/25 PA-F

WDZ GOLDEN STATE 076 { BAR S GOLDEN STATE 5532
JLS LANZA LADY 3945 PLD

PVF IMPRESS LEDGER 5220 { PV LEDGER 1283 PLD
PV TOP PRO 1113 PLD

BW	WW	YW	YR	ADG
101	843	1475	102.7	3.95

EPDs	CE	BW	WW	YW	MILK	TSI
	7.4	0.3	78	137	36	289

This bull ratioed 106 at weaning. Use him to add growth.

Lot 148 PVFC GOLDEN STATE 5148 PLD

M1016806 Polled Calved: 3/13/25 PA-C

WDZ GOLDEN STATE 076 { BAR S GOLDEN STATE 5532
JLS LANZA LADY 3945 PLD

PVF 4203 FAST EASE { PV TOP PRO 0950 PLD
PV EASE 0610 PLD

BW	WW	YW	YR	ADG
95	854	1428	99.4	3.59

EPDs	CE	BW	WW	YW	MILK	TSI
	10.9	0.8	70	118	23	264

Note this bull's weaning weight and overall performance.



The power of payweight starts with a **registered Charolais bull**. Superior weaning weight matters in your operation, and every pound translates to profit. Rely on the Payweight Specialist to deliver more dollars per head per calf weaned. To make a difference on your next calf crop, **start with Charolais.**

FALL BULLS

Lot 301 PVFC OLYMPUS 4301 PLD

M1011874 Polled Calved: 9/16/24 PA-F

FC OLYMPUS 2092 PLD ET { PVF RIDGE 7142
LT BRENDA 2184 PLD

PVFC DAKOTA RUSH 2212 PLD { LT TIOGA 9704 PLD
PVFC DAKOTA RUSH 9214

BW	WT	ACT WT 12-19-25	ADG
82	777	1610	3.26

EPDs

CE	BW	WW	YW	MILK	TSI
14.6	-3.3	80	142	34	279

This Olympus son was modest at birth and should offer good calving ease.

Lot 307 PVFC OLYMPUS 4307 PLD

M1011881 Polled Calved: 9/10/24 PA-F

FC OLYMPUS 2092 PLD ET { PVF RIDGE 7142
LT BRENDA 2184 PLD

PVFC DAKOTA RUSH 2415 PLD { SCR LC CORONA 439
9417 PVFC DAKOTA RUSH PLD

BW	WT	ACT WT 12-19-25	ADG
95	917	1730	3.72

EPDs

CE	BW	WW	YW	MILK	TSI
7.9	1.5	103	172	21	288

Another Olympus son that boasts a weaning weight over 900 lbs.

Lot 305 PVFC CRUSH 4305 PLD

M1011878 Polled Calved: 10/7/24 PA-F

GHC CRUSH 1513 { GHC REAGAN 9012
M&M MS CARBINE 1567 PLD

PVFC TIOGA 2410 PLD { WCR TITAN 061 P
PVFC TIOGA 0418 PLD

BW	WT	ACT WT 12-19-25	ADG
102	782	1430	3.04

EPDs

CE	BW	WW	YW	MILK	TSI
8.8	0.9	79	135	34	286

A higher-performance son of GHC Crush. He is in the top 20% for TSI.



Lot 306 PVFC OLYMPUS 4306 PLD

M1011879 Polled Calved: 9/2/24 PA-F

FC OLYMPUS 2092 PLD ET { PVF RIDGE 7142
LT BRENDA 2184 PLD

PVFC AUTHORITY 2414 PLD { LT AFFINITY 6221 PLD
9409 PVFC AUTHORITY PLD

BW	WT	ACT WT 12-19-25	ADG
102	942	1830	3.8

EPDs

CE	BW	WW	YW	MILK	TSI
4.1	2	87	161	22	265

This bull offers excellent growth. He has a 942 lb. weaning weight to ratio 123.

Lot 308 PVFC OLYMPUS 4308 PLD

M1011880 Polled Calved: 9/5/24 PA-F

FC OLYMPUS 2092 PLD ET { PVF RIDGE 7142
LT BRENDA 2184 PLD

PVFC WIND 2417 PLD { LT LANDMARK 5052 PLD
9419 PVFC WIND PLD

BW	WT	ACT WT 12-19-25	ADG
89	826	1680	3.3

EPDs

CE	BW	WW	YW	MILK	TSI
15.2	-2.9	68	132	29	269

This bull's growth EPDs are within the top one-third of the breed.



Lot 309 PVFC CRUSH 4309 PLD

M1012048 Polled Calved: 10/1/24 PA-F

GHC CRUSH 1513 { GHC REAGAN 9012
M&M MS CARBINE 1567 PLD

PVFC LANDMARK 2423 PLD { LT TIOGA 9704 PLD
7404 PVF WICHMARK

BW	WT	ACT WT 12-19-25	ADG
101	882	1570	3.53

EPDs

CE	BW	WW	YW	MILK	TSI
7.4	1.2	80	128	35	278

A Crush son that ratioed 115 at weaning. He is also in the top 8% of the breed for REA.

Lot 310 PVFC GREAT DIVIDE 4310 PLD

M1011882 Polled Calved: 8/24/24 PA-F

WDZ GREAT DIVIDE 2071 { TRI-N BROOKS 34H
JLS MORE POWER 7110 PLD

PVFC RIVER RIDGE 1401 PLD { LT RIVER RIDGE 6034 PLD
PV TOP PRO 1188 PLD

BW	WT	ACT WT 12-19-25	ADG
90	784	1760	3.24

EPDs	CE	BW	WW	YW	MILK	TSI
	11.5	-0.3	73	125	32	278

This Great Divide son is in the top 20% of the breed for his WW EPD and the top 35% for his TSI.



Lot 312 PVFC GREAT DIVIDE 4312 PLD

M1011884 Polled Calved: 8/29/24 PA-F

WDZ GREAT DIVIDE 2071 { TRI-N BROOKS 34H
JLS MORE POWER 7110 PLD

PVFC RIDGE 1407 PLD { PVF RIDGE 7142
PVF RESERVE 5412

BW	WT	ACT WT 12-19-25	ADG
85	781	1690	3.25

EPDs	CE	BW	WW	YW	MILK	TSI
	11.3	-0.9	63	112	32	271

This bull offers a double-digit CE EPD along with a 781 lb. weaning weight.

Lot 313 PVFC GREAT DIVIDE 4313 PLD

M1011885 Polled Calved: 9/8/24 PA-F

WDZ GREAT DIVIDE 2071 { TRI-N BROOKS 34H
JLS MORE POWER 7110 PLD

PVFC AUTHORITY 1414 PLD { LT AUTHORITY 7229 PLD
7401 PVF RESERVE

BW	WT	ACT WT 12-19-25	ADG
90	926	1760	3.94

EPDs	CE	BW	WW	YW	MILK	TSI
	9.2	0.4	78	134	24	264

Excellent performance bull with a 926 lbs. of weaning growth to ratio 121.



Lot 311 PVFC GREAT DIVIDE 4311 PLD

M1011883 Polled Calved: 8/29/24 PA-F

WDZ GREAT DIVIDE 2071 { TRI-N BROOKS 34H
JLS MORE POWER 7110 PLD

PVFC AFFINITY 1404 PLD { LT AFFINITY 6221 PLD
PVF EASY TRACE 5230

BW	WT	ACT WT 12-19-25	ADG
86	849	1650	3.58

EPDs	CE	BW	WW	YW	MILK	TSI
	12.9	-3.8	84	133	28	283

Here is a high-performance Great Divide son that ratioed 111 at weaning.



Lot 314 PVFC GREAT DIVIDE 4314 PLD

M1011886 Polled Calved: 8/14/24 PA-F

WDZ GREAT DIVIDE 2071 { TRI-N BROOKS 34H
JLS MORE POWER 7110 PLD

PVFC LOCK N LOAD 1420 PLD { EC LOCK N LOAD 951 PLD
PVFC DAKOTA RUSH 9210

BW	WT	ACT WT 12-19-25	ADG
88	743	1690	3.04

EPDs	CE	BW	WW	YW	MILK	TSI
	15.5	-2.2	74	121	23	284

This bull offers more carcass quality potential with a Marbling EPD that ranks in the top 20% of the breed.

Lot 315 PVFC GREAT DIVIDE 4315 PLD

M1011887 Polled Calved: 8/31/24 PA-F

WDZ GREAT DIVIDE 2071 { TRI-N BROOKS 34H
JLS MORE POWER 7110 PLD

PVFC LOCK N LOAD 1424 PLD { EC LOCK N LOAD 951 PLD
9419 PVFC WIND PLD

BW	WT	ACT WT 12-19-25	ADG
88	822	1700	3.44

EPDs	CE	BW	WW	YW	MILK	TSI
	10.4	0.2	84	141	24	282

Good spread on this bull with a double-digit calving ease and over 800 lbs. of weaning growth.

Lot 316 PVFC GREAT DIVIDE 4316 PLD

M1011888 Polled Calved: 9/19/24 PA-F

WDZ GREAT DIVIDE 2071 { TRI-N BROOKS 34H
JLS MORE POWER 7110 PLD

PVFC 0205 SYNDICATE PLD { LT SYNDICATE 6409 PLD
PVF 4219 EASY TOP

BW	WT	ACT WT 12-19-25	ADG
95	791	1640	3.43

EPDs	CE	BW	WW	YW	MILK	TSI
	8.2	-1.1	69	118	27	276

This bull is very balanced both in terms of his EPD's and his phenotype.

Lot 317 PVFC GREAT DIVIDE 4317 PLD

M1011890 Polled Calved: 9/1/24 PA-F

WDZ GREAT DIVIDE 2071 { TRI-N BROOKS 34H
JLS MORE POWER 7110 PLD

PVFC CAPITAL 0410 PLD { WDZ CAPITAL 617 P
PVF LEDGER 5416

BW	WT	ACT WT 12-19-25	ADG
102	800	1800	3.38

EPDs	CE	BW	WW	YW	MILK	TSI
	7.4	0.2	69	129	31	284

Big growth bull that weighed 800 lbs. at weaning time.



Lot 318 PVFC RANSOM 4318 PLD

M1011891 Polled Calved: 9/27/24 PA-F

LT RANSOM 1927 PLD { LT RANSOM 8644
LT MADELINE 6113 PLD

PVFC AUTHORITY 0414 PLD { LT AUTHORITY 7229 PLD
7406 PVF DAKLANDMARK

BW	WT	ACT WT 12-19-25	ADG
97	755	1440	3.2

EPDs	CE	BW	WW	YW	MILK	TSI
	6.7	-0.4	65	116	15	232

This Ransom son is in the top 15% of the breed for Marbling.

Lot 319 PVFC GREAT DIVIDE 4319 PLD

M1011892 Polled Calved: 9/14/24 PA-F

WDZ GREAT DIVIDE 2071 { TRI-N BROOKS 34H
JLS MORE POWER 7110 PLD

PVFC TIOGA 0418 PLD { LT TIOGA 4090 PLD
PVFC LANDMARK 8402 PLD

BW	WT	ACT WT 12-19-25	ADG
97	791	1720	3.37

EPDs	CE	BW	WW	YW	MILK	TSI
	8.2	-0.4	79	141	26	284

A Great Divide son that is in the top 25% of the breed for TSI.



Lot 320 PVFC BUSTER 4320 PLD

M1011893 Polled Calved: 9/28/24 PA-F

WCR BUSTER 166 P { ELDER'S BLACKJACK 788B
WCR MS TANK 9227 P

PVFC CAPITAL 9217 { WDZ CAPITAL 617 P
PVF EASY TRACE 5229

BW	WT	ACT WT 12-19-25	ADG
78	769	1580	3.41

EPDs	CE	BW	WW	YW	MILK	TSI
	17.8	-4.7	60	106	33	270

This Buster son offers more calving ease with a marbling EPD that ranks in the top 35% of the entire breed.



Lot 323 PVFC TITAN 4323 PLD

M1011896 Polled Calved: 9/26/24 PA-F

WCR TITAN 061 P { DC/CRJ TANK E108 P
WCR MS DUKE 8526 ET P

PVF RESERVE 6416 { LT RESERVE 3274 PLD
PV DAKOTA DIAMOND 0982

BW	WT	ACT WT 12-19-25	ADG
98	848	1610	3.7

EPDs	CE	BW	WW	YW	MILK	TSI
	15	-1.5	80	144	30	289

Here is a bull with a 111 weaning weight ratio alongside a calving ease EPD that ranks in the top 20% of the breed.

Lot 324 PVFC TITAN 4324 PLD

M1011897 Polled Calved: 8/26/24 PA-F

WCR TITAN 061 P { DC/CRJ TANK E108 P
WCR MS DUKE 8526 ET P

PVF RESERVE 6417 { LT RESERVE 3274 PLD
PV DAKOTA DIAMOND 0990 TW

BW	WT	ACT WT 12-19-25	ADG
90	803	1700	3.5

EPDs	CE	BW	WW	YW	MILK	TSI
	12.4	0.5	85	140	28	296

This bull weighed over 800 lbs. at weaning to ratio 105.



Lot 321 PVFC TITAN 4321 PLD

M1011894 Polled Calved: 8/27/24 PA-F

WCR TITAN 061 P { DC/CRJ TANK E108 P
WCR MS DUKE 8526 ET P

PVFC 8227 ASSET CAPITAL { WDZ CAPITAL 617 P
PVF ASSET 5205

BW	WT	ACT WT 12-19-25	ADG
85	739	1700	3.21

EPDs	CE	BW	WW	YW	MILK	TSI
	12.2	-1.8	86	145	25	293

A Titan son that is in the top 15% of the breed for TSI.

Lot 322 PVFC TITAN 4322 PLD

M1011895 Polled Calved: 9/5/24 PA-F

WCR TITAN 061 P { DC/CRJ TANK E108 P
WCR MS DUKE 8526 ET P

PVF RESERVE 6409 { LT RESERVE 3274 PLD
PV TOP PRO 1186 PLD

BW	WT	ACT WT 12-19-25	ADG
94	878	1800	3.85

EPDs	CE	BW	WW	YW	MILK	TSI
	19	-3.9	82	145	35	307

This Titan son weighed nearly 900 lbs. at weaning.



Lot 325 PVFC TITAN 4325 PLD

M1011898 Polled Calved: 8/21/24 PA-F

WCR TITAN 061 P { DC/CRJ TANK E108 P
WCR MS DUKE 8526 ET P

PVF RESERVE 6419 { LT RESERVE 3274 PLD
PV PRIME POWER 0787 PLD TW

BW	WT	ACT WT 12-19-25	ADG
100	859	1780	3.72

EPDs

CE	BW	WW	YW	MILK	TSI
11.2	1	84	152	34	300

A high-performance son that is in the top 7% of the breed for TSI.



Lot 327 PVFC TITAN 4327 PLD

M1011900 Polled Calved: 10/3/24 PA-F

WCR TITAN 061 P { DC/CRJ TANK E108 P
WCR MS DUKE 8526 ET P

PVF SILVER ARROW 5421 { LT SILVER ARROW 2049 PLD
PV EASE 0612 PLD

BW	WT	ACT WT 12-19-25	ADG
91	843	1700	3.72

EPDs

CE	BW	WW	YW	MILK	TSI
17.7	-3.7	71	140	32	284

Excellent performance in this bull as he ratios 110 at weaning.

Lot 328 PVFC TITAN 4328 PLD

M1011901 Polled Calved: 8/31/24 PA-F

WCR TITAN 061 P { DC/CRJ TANK E108 P
WCR MS DUKE 8526 ET P

PVF 4209 TOP DIAMOND { BHC TOP PRO 7025 P
PV DAKOTA DIAMOND 808 PLD

BW	WT	ACT WT 12-19-25	ADG
74	779	1510	3.46

EPDs

CE	BW	WW	YW	MILK	TSI
17.9	-5.3	59	109	28	272

This is a calving ease bull that still weaned off over 750 lbs.

Lot 326 PVFC TITAN 4326 PLD

M1011899 Polled Calved: 9/16/24 PA-F

WCR TITAN 061 P { DC/CRJ TANK E108 P
WCR MS DUKE 8526 ET P

PVF RESERVE 5413 { LT RESERVE 3274 PLD
PV DAKOTA DIAMOND 1196 P

BW	WT	ACT WT 12-19-25	ADG
92	805	1680	3.51

EPDs

CE	BW	WW	YW	MILK	TSI
17.7	-2.4	74	136	25	297

This bull is in the top 6% of the breed for CE and 30% for BW.



Platte Livestock Market

www.plattelivestockmarket.com
 Toll free: 1-800-337-2655
 1 mile west of Platte on Hwy 44

Scott Kirsch: 605-680-1900 or 605-337-2616
 Marshall Ringling: 605-680-1892 or 605-243-2328

Pranger Feed Mill

Feed Service & Sales Since 1980



605-337-3091
Fax (605) 337-2223

Email: sdchow@midstatesd.net



John Pranger - Owner Jason Kuhlman - Sales
Darwin DeGroot - Mill

008 E. Railway W. • PO Box 245
Platte, SD 57369
www.prangersfeedmill.com

24 Hour Small & Large Animal
Vet Service & Boarding

EAST RIVER VETERINARY CLINIC

Haley K Hoiem, DVM Platte, SD 605.337.2168

Bruns

ULTRASOUND SERVICE

Kama Bruns
Bruns Ultrasound Service
24952 384th Ave • Plankinton, SD 57368
Phone: 605-484-6045

Modern Woodmen

FRATERNAL FINANCIAL



Lynn Walstad, FIC
Platte, SD 57369
605-337-2853



Custom PRINTING

Jennifer Oberbroekling, Owner
318 Main Ave • PO Box 478
Platte, SD 57369
Phone: 605-337-2390
Email: customprint@midstatesd.net



CK Sales and Marketing LLC.
7863 Timber Ridge Dr. - Seneca, Mo 64865



Custom Laser Engraved Tags
(605) 680-3867
Platte, SD

A Big Thanks!

- Dustin Carter - Auctioneer
- Karen DeGroot - Meal
- Kama Bruns Ultrasound Service - Ultrasound Data
- Rick Geppert and Kelvin Petersen - Clipped Bulls
- JD's - Caps
- Alex Rumford, Focus Marketing Group - Website
- Ron Sly, Lyndon DeVries, Kevin Kuiper,
- Jacques Naude & Loren Sprik - Hired men
- Alison Luhr - Cattle Records
- Courtney DeVries - Secretary
- Riley Zoss-Littau, LZ Livestock - Photos
- Tyler and Taylor Grussing, Dakota Repo - AI and Embryo

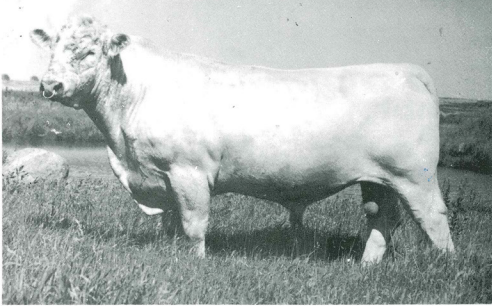
THANK YOU TO ALL BUYERS AND BIDDERS IN OUR SALE.

We greatly appreciate the support of everyone involved.

Please let us know if we can help with any questions.



A look into the past...



	BW	WW	YW	Milk
EPD's	0.9	11.6	7.9	-13.3
Wts./Ratios	103	774/113	1310/109	
Semen: \$50 straw				

UNLIMITED CHAPS "THE REAL BEEF BULL"

Chaps is moderate framed, very docile
 Scrotal 49 1/2 cm at 22 months
 His calves are very thick, moderate framed
 Good disposition, Polled
 He was lead bull in 1991 National Western Reserve Champion Pen of Bulls

70 POLLED BULLS SELL
February 25, 1995
 1 p.m.
 Platte, South Dakota
 65 Polled Yearlings
 5 Polled Two-Year-Olds
 Offering polled herd sire prospects sired by these ranch proven sires...



LT Unlimited Chaps 0109 Pld
 EPDs: 0.4 15.0 8.1 -3.2 4.2
 His progeny tell the story - 26 sons sell!



DC Mr Joker 834B Pld
 EPDs: 5.9 28.6 82.0 -4.9 14.9
 26th National Reserve Grand - His first sons sell!



Sir EC The Sting 194 Pld
 EPDs: 1.7 34.6 27.7 3.3 20.7
 Great numbers! Top quality sons sell.

Also selling sons of...

PV Contender Mac 807 Pld
 EPDs: 2.8 34.4 76.3 -0.4 16.8
 PV Contender Mac 9229B Pld
 EPDs: -0.6 22.8 44.5 4.2 15.6

PRAIRIE VALLEY FARM, INC.

Clarence Mason
 R.R. 2, Box 25 • Platte, SD 57369

PRAIRIE VALLEY FARM CHAROLAIS BULL SALE

Saturday, February 26, 1994 1:00 PM
 Platte Livestock Market, Platte, SD

SELLING

6 - 2 year olds 60 Yearlings
 Polled Performance Tested Bulls
 Featuring 28 Polled Yearling Sons of CHAPS

CHAPS: The Bull that is impressing cattlemen worldwide
 Semen sold in 19 states, Brazil, Canada, New Zealand, and Mexico

CHAPS

- *Homozygous polled by Polled Unlimited
- *Lead Bull 1991 National Western Reserve
- *Champion Pen 22 Month Scrotal 49 1/2 cm.
- *EPD's: BW: -0.3 WW: +23.8 YW: +27.2 Milk: -0.3 TM: +11.5



Calves are very gentle and easy to handle
 Moderate Frame and Very Thick

OTHER SIRES

- LT Gunsmoke 1129 PLD
- EC The Sting 194 PLD
- PV CuJo 156 PLD
- PV Contender MAC 807 PLD

AUCTIONEERS

Vernell Qualm, Platte Wayne Haines, White Lake

We encourage you to stop in and look at the bulls anytime

PRAIRIE VALLEY FARM

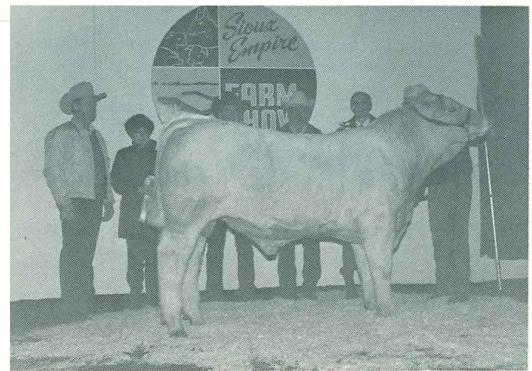
Location: 5 Miles West of Platte, SD on Highway 44

FOR MORE INFORMATION CONTACT

Clarence Mason 605-337-3545
 David Mason 605-337-2521
 Randal Mason 605-337-2435
 Ron Sly 337-3175

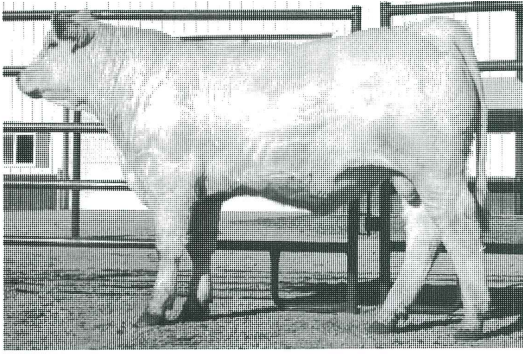
Write:
 R.R. 2 Box 25
 Platte, SD 57369-9321

Arrangements can be made to board the Yearling Bulls

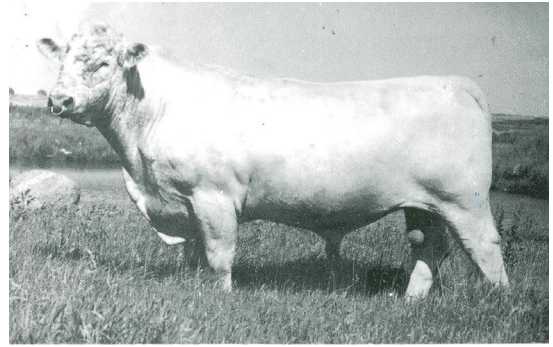


An Immortal son, exhibited by Jim Bloom of Rapid City, S.D., took the Reserve Grand Champion honors. He sold for \$3,600 to Clarence Mason of Platte, S.D.

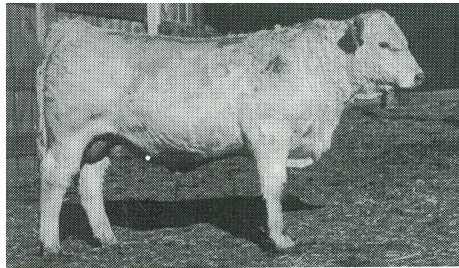




JLS Prime Power 046P PLD



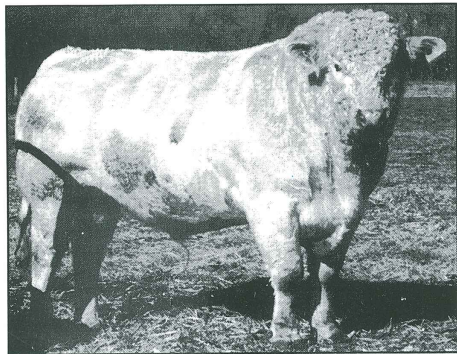
Unlimited Chaps "The Real Beef Bull"



SIRE: PV CHAPEL 9901



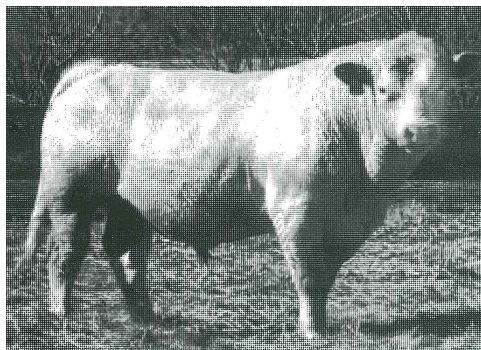
The grand and senior champion bull, Dc Mr Joker 634B Pld, March 23, 1992, sired by Thomas Mr Joker 912 ET, was exhibited by Thomas Ranch, Harrold, S.D.; Metger Cattle Co., Whitman, Neb.; Silver Spur Ranches, Encampment, Wyo.; and Prairie Valley Farms, Platte, S.D.



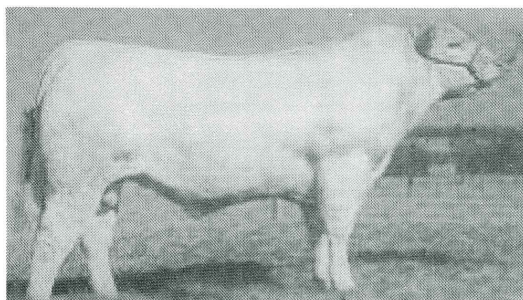
SIRE: 2 TM FASTLANE 204 PLD



Grand Champion and high-selling bull, SH Expect More 001 Polled, was consigned by Silver Hills Farm, Holland, Minn., and was purchased by Prairie Valley Farm, Platte, S.D., for \$4,300.



SIRE: PV Extraordinary 0255 PLD



SCHURRTOP EASE 8953
12 - 18 Month Sons and 7 Yearling Sons sell



PVF Ridge 7142

PRAIRIE VALLEY FARM

CHAROLAIS

www.pvfcharolais.com



David Mason

36324 SD Hwy 44 • Platte, SD 57369
605-680-0780

Lyndon DeVries

27578 365th Ave • Platte, SD 57369
605-481-0474



Visitors Welcome!

PRAIRIE VALLEY FARM

CHAROLAIS

Clarence Mason
www.pvfcharolais.com
David Mason: Cell 605-680-0780



WDZ AEROSMITH 1109 PLD



LT JUDGE 0691 PLD

SATURDAY, APRIL 11, 2026 • 1:00 P.M.
PLATTE LIVESTOCK MARKET, PLATTE, SD

PLEASE BRING THIS CATALOG TO THE SALE.